



LABOR SITUATION

Office of Research

Danté Bartolomeo, Commissioner

FOR IMMEDIATE RELEASE

July 2022 Data

CT Unemployment Rate = 3.7%

US Unemployment Rate = 3.5%

Connecticut payrolls gain 6,500 jobs; jobless rate down to 3.7% in July

WETHERSFIELD, August 18, 2022 – Connecticut nonfarm payrolls gained 6,500 positions (0.4%) to 1,658,800 in July 2022 as the state’s unemployment rate continued to fall, dropping another three-tenths of a percentage point to 3.7% (preliminary data, seasonally adjusted). Connecticut’s industry payroll employment is now 32,200 (2.0%) positions higher than in July 2021 - helped by seven straight monthly gains in 2022. The Nutmeg State has now recovered 86.1% (249,200) of the 289,400 nonfarm positions lost in the March/April 2020 COVID lockdown. The initially released June 2022 job gain of 1,700 (0.1%) was revised up by 1,300 positions to a 3,000 monthly gain (0.2%). This release presents labor statistics from two surveys produced by U.S. Bureau of Labor Statistics (BLS) in collaboration with the states.

“Job growth has been consistent in 2022 and the unemployment rate is down to its early 2019 level,” said Patrick Flaherty, Director of the Office of Research at the Connecticut Department of Labor. “Many industries are above pre-pandemic levels including construction, wholesale trade, and professional, scientific, & technical services.”

Connecticut’s private sector employment increased 2,600 jobs (0.2%) in July 2022 to 1,431,100 and is higher by 31,400 positions (2.2%) from the July 2021 level. The state’s private sector is 88.3% recovered from the April 2020 COVID employment trough. The **government supersector** was much higher last month, adding 3,900 jobs (1.7%) to a level of 227,700. This is now 800 positions (0.4%) above the July 2021 total government levels. The public sector is now 61.9% recovered from the COVID lockdown. The government *supersector* in Connecticut includes all federal, state, local, and tribal government employment, including public education and Native American casino employment located on reservations. Local government was particularly strong in July adding 3,800 seasonally adjusted jobs. Not seasonally adjusted, local government employment fell but the decline was less than usually occurring in the month of July.

Six of the ten major industry *supersectors* increased employment, while four decreased.

The six Connecticut industry *supersectors* that gained jobs in July 2022:

Increasing Sectors (Seasonally Adjusted)			
Industry Sector	Amount of Increase	Percent Change	July 2022 Employment
Government	+3,900	1.7%	227,700
Construction & Mining	+1,500	2.5%	61,200
Trade, Transportation, & Utilities	+800	0.3%	297,600
Manufacturing	+700	0.4%	159,700
Professional & Business Services	+500	0.2%	219,000
Education & Health Services	+400	0.1%	337,500

The four industry *supersectors* that declined in jobs last month:

Decreasing Sectors (Seasonally Adjusted)			
Industry Sector	Amount of Decrease	Percent Change	July 2022 Employment
Leisure & Hospitality	-600	-0.4%	147,500
Other Services	-400	-0.7%	59,900
Information	-200	-0.7%	30,000
Financial Activities	-100	-0.1%	118,700

Connecticut Labor Market Areas (LMAs): Three of the six larger Connecticut *LMAs*, that are seasonally adjusted by the BLS, posted employment gains, while three regions saw small declines in July 2022. The ***Bridgeport-Stamford-Norwalk LMA*** (0.5%, 394,200) added 2,000 positions to lead this month in numerical gains while the ***Danbury LMA*** (1.2%, 75,500) was the biggest percentage gainer - adding 900 jobs. The ***New Haven LMA*** (0.5%, 293,200) also chipped in 1,400 jobs. The ***Norwich-New London-Westerly LMA*** (-0.3%, 119,900) lost the most positions (-400), with the ***Waterbury LMA*** (-0.3%, 65,800) also down 200 jobs and the ***Hartford LMA*** (-0.02%, 569,300) dropping just 100 in nonfarm employment.

Note: The six major Connecticut LMAs are independently estimated from the statewide data by the BLS and cover around 90% of the nonfarm employment in the state. Thus, estimates will not exactly sum to the statewide total.

Hours and Earnings: The July 2022 **private sector** workweek, *not seasonally adjusted*, averaged 33.6 hours. This is lower by one-half hour (-1.5%) from the July 2021 estimate. Average hourly earnings at \$34.53, not seasonally adjusted, were up by \$0.87 (2.6%) from the July 2021 estimate of \$33.66. The resultant July 2022 private sector weekly wage averaged \$1,160.21, higher by \$12.40 from a year ago (1.1%, \$1,147.81). The Consumer Price Index for All Urban Consumers (CPI-U, U.S. City Average, not seasonally adjusted) in July 2022 was up 8.5% from a year ago. *Current all-employee private sector hours and earnings estimates can be volatile due to fluctuating sample responses.*

Labor Force Data (residential household survey)

The July 2022 unemployment rate for Connecticut was estimated by the BLS Local Area Unemployment Statistics program (LAUS) to be **3.7%** (seasonally adjusted), lower by three-tenths of a percentage point from the June 2022 level of 4.0%. The 5,600 monthly drop in the number of July unemployed was considered statistically significant. The Connecticut unemployment rate was 6.3% in July 2021. The jobless rate was 3.4% in February 2020 (pre-COVID). The U.S. unemployment rate for July 2022 was 3.5%, down one-tenth of a percent from June 2022 and down from the July 2021 jobless rate of 5.4%.

Unemployment claims for first-time filers (seasonally adjusted) in Connecticut were an average of 10,124 per week in July 2022, up by 8,324 (462.4%) from the June 2022 (1,800) level and higher by 6,232 claims (160.1%) than the average weekly count of 3,892 in July 2021. Average weekly initial unemployment claims in June 2022 and July 2022 were affected by the transition to ReEmployCT, Connecticut's modernized unemployment insurance system. Criminals continue to use stolen identities to try to file claims. Connecticut has multiple verification processes in place to ensure that proper unemployment benefit payments are made.

*The nonfarm employment estimate, derived from a survey of businesses, is a measure of jobs in the state; the unemployment rate and labor force estimates are based on a household survey, and measure the work status of people who live in Connecticut. Overall, as the national and state economies recover, volatility in monthly numbers can be expected. **Job and employment estimates are best understood in the context of their movement over several months rather than observed changes in a single month's value.***

Next Connecticut Labor Situation release: Thursday, September 15, 2022
(Preliminary August 2022 data)

Contact:
Communications, CT Department of Labor
CTDOL.SocialMedia@ct.gov

Labor Market Information is available at: www.ctworkforce.info
200 Folly Brook Boulevard, Wethersfield, CT 06109-1114 www.ct.gov/dol
An Equal Opportunity/Affirmative Action Employer

NONFARM EMPLOYMENT

Jobs - by Place of Work

CONNECTICUT AND THE UNITED STATES - Seasonally Adjusted

	July 2022 P	June 2022 R	May 2022	April 2022	July 2021	Over Month Change	Over Month Rate	Over Year Change	Over Year Rate
CONNECTICUT	1,658,800	1,652,300	1,649,300	1,646,900	1,626,600	6,500	0.4%	32,200	2.0%
Total Private	1,431,100	1,428,500	1,426,600	1,423,100	1,399,700	2,600	0.2%	31,400	2.2%
Goods Producing Industries									
Mining	500	500	500	500	500	0	0.0%	0	0.0%
Construction	60,700	59,200	61,100	62,700	59,200	1,500	2.5%	1,500	2.5%
Manufacturing	159,700	159,000	159,200	159,200	153,300	700	0.4%	6,400	4.2%
Durable Goods	124,000	123,500	123,700	123,500	120,000	500	0.4%	4,000	3.3%
Nondurable Goods	35,700	35,500	35,500	35,700	33,300	200	0.6%	2,400	7.2%
Service Providing Industries									
Trade, Transportation & Utilities	297,600	296,800	295,600	294,900	293,100	800	0.3%	4,500	1.5%
Wholesale	60,700	60,600	60,100	59,500	57,400	100	0.2%	3,300	5.7%
Retail	168,000	167,900	167,700	167,300	168,600	100	0.1%	-600	-0.4%
Transp, Warehousing & Utilities	68,900	68,300	67,800	68,100	67,100	600	0.9%	1,800	2.7%
Information	30,000	30,200	30,400	29,900	30,300	-200	-0.7%	-300	-1.0%
Financial Activities	118,700	118,800	119,200	118,100	117,400	-100	-0.1%	1,300	1.1%
Finance & Insurance	99,200	99,400	99,700	98,700	98,800	-200	-0.2%	400	0.4%
Real Estate, Rental & Leasing	19,500	19,400	19,500	19,400	18,600	100	0.5%	900	4.8%
Professional & Business Services	219,000	218,500	216,900	215,800	213,800	500	0.2%	5,200	2.4%
Prof, Scientific & Tech Services	97,400	96,400	96,400	95,800	95,700	1,000	1.0%	1,700	1.8%
Management of Companies	30,900	30,500	30,300	30,300	30,500	400	1.3%	400	1.3%
Admn & Support & Waste Mgt Serv	90,700	91,600	90,200	89,700	87,600	-900	-1.0%	3,100	3.5%
Educational & Health Services	337,500	337,100	335,100	334,000	335,400	400	0.1%	2,100	0.6%
Educational Services	67,900	67,800	67,600	66,200	65,600	100	0.1%	2,300	3.5%
Health Care & Social Assistance	269,600	269,300	267,500	267,800	269,800	300	0.1%	-200	-0.1%
Leisure and Hospitality	147,500	148,100	147,600	147,700	138,200	-600	-0.4%	9,300	6.7%
Arts, Entertainment & Recreation	25,600	25,900	26,200	27,000	24,600	-300	-1.2%	1,000	4.1%
Accommodation & Food Services	121,900	122,200	121,400	120,700	113,600	-300	-0.2%	8,300	7.3%
Other Services	59,900	60,300	61,000	60,300	58,500	-400	-0.7%	1,400	2.4%
Government**	227,700	223,800	222,700	223,800	226,900	3,900	1.7%	800	0.4%
UNITED STATES	152,536,000	152,008,000	151,610,000	151,224,000	146,387,000	528,000	0.3%	6,149,000	4.2%

LABOR MARKET AREAS (LMA)

Labor Market Area employment estimates are made independently of Statewide estimates.

	July 2022 P	June 2022 R	May 2022	April 2022	July 2021	Over Month Change	Over Month Rate	Over Year Change	Over Year Rate
<i>Seasonally Adjusted data</i>									
Bridgeport-Stamford-Norwalk	394,200	392,200	392,800	392,800	389,600	2,000	0.5%	4,600	1.2%
Danbury	75,500	74,600	74,300	74,800	74,600	900	1.2%	900	1.2%
Hartford	569,300	569,400	568,000	568,600	561,700	-100	0.0%	7,600	1.4%
New Haven	293,200	291,800	292,000	293,500	287,500	1,400	0.5%	5,700	2.0%
Norwich-New London-Westerly, RI	119,900	120,300	120,800	120,200	117,800	-400	-0.3%	2,100	1.8%
Waterbury	65,800	66,000	65,400	65,500	65,800	-200	-0.3%	0	0.0%
<i>Not Seasonally Adjusted data (Non-Classified Areas, State estimated - not BLS)</i>									
Enfield	42,100	42,200	41,700	40,900	41,500	-100	-0.2%	600	1.4%
Torrington-Northwest	33,400	33,000	32,200	31,000	32,500	400	1.2%	900	2.8%
Danielson-Northeast	27,000	27,100	26,800	26,200	26,400	-100	-0.4%	600	2.3%

* Less than 0.05% ** Includes Native American tribal government employment

P = Preliminary

R = Revised

Starting with March, 2011, our monthly statewide and major LMA nonfarm job estimates have been taken over by the US Department of Labor Bureau of Labor Statistics. This is the final phase of transition in this program, which began in 2008. As a result of changes in the estimation procedures, you are likely to see more variability in month-to-month estimates of job counts. Caution should be used in interpreting any single month's estimate. The data are best interpreted to identify trends and cycles over several months and quarters. If you have any questions about these changes, please email us at: dol.lmi@ct.gov. Danbury and Waterbury LMA's are now back to being seasonally adjusted.

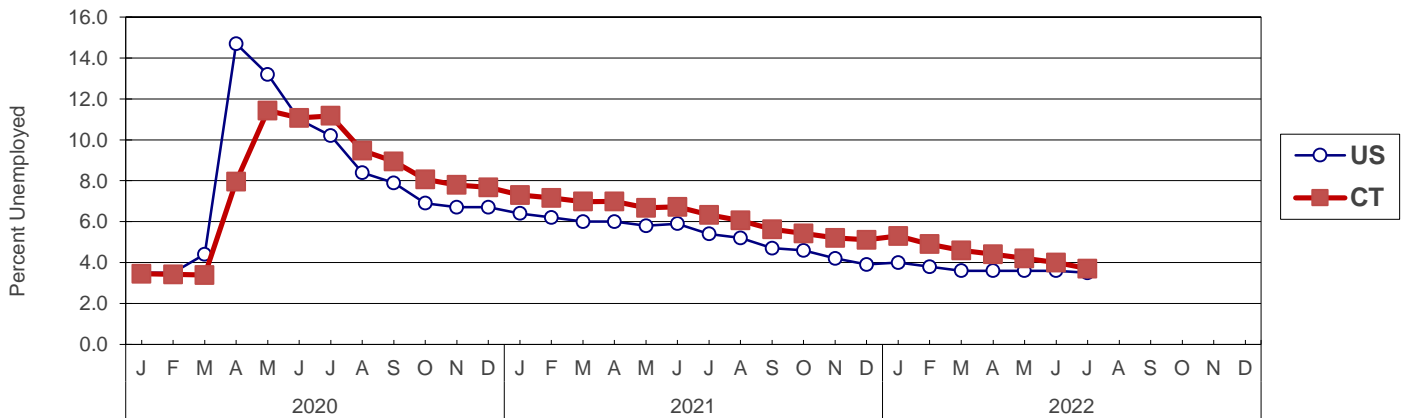
UNEMPLOYMENT

Persons Unemployed - by Place of Residence

CONNECTICUT AND THE UNITED STATES - Seasonally Adjusted

	Jul 2022 P		Jul 2021 R		Change		Jun 2022 R	
	Number	Rate	Number	Rate	Number	Points	Number	Rate
CONNECTICUT								
Unemployed	70,400	3.7	117,700	6.3	-47,300	-2.6	76,000	4.0
Labor Force	1,899,200		1,859,900		39,300		1,901,300	
UNITED STATES								
Unemployed	5,670,000	3.5	8,671,000	5.4	-3,001,000	-1.9	5,912,000	3.6
Labor Force	163,960,000		161,375,000		2,585,000		164,023,000	

U.S. AND CONNECTICUT UNEMPLOYMENT RATES - Seasonally Adjusted 2020 - 2022



LABOR MARKET AREAS - Not Seasonally Adjusted

	Jul 2022 P		Jul 2021 R		Change		Jun 2022 R	
	Number	Rate	Number	Rate	Number	Points	Number	Rate
Bridgeport-Stamford	21,000	4.4	30,700	6.6	-9,700	-2.2	19,700	4.2
Danbury	4,000	3.7	5,900	5.6	-1,900	-1.9	3,700	3.5
Danielson-Northeast*	1,800	4.0	2,600	6.0	-800	-2.0	1,700	3.8
Worcester NECTA	1,700	4.1	2,500	6.1	-800	-2.0	1,600	3.8
Hampton	100	3.2	100	4.8	0	-1.6	100	3.1
Enfield	1,900	3.8	2,900	5.9	-1,000	-2.1	1,800	3.6
Hartford	27,300	4.4	41,200	6.7	-13,900	-2.3	25,900	4.1
New Haven	14,000	4.1	20,900	6.3	-6,900	-2.2	13,200	3.9
Norwich-New London	6,200	4.4	9,700	7.0	-3,500	-2.6	6,100	4.4
Torrington-Northwest**	1,800	3.8	2,800	5.8	-1,000	-2.0	1,800	3.7
Torrington NECTA	1,200	4.7	1,800	7.0	-600	-2.3	1,200	4.5
Litchfield	600	2.9	900	4.4	-300	-1.5	600	2.8
Waterbury	6,100	5.4	8,900	8.0	-2,800	-2.6	5,700	5.1
CONNECTICUT	83,600	4.3	124,700	6.6	-41,100	-2.3	79,000	4.1
UNITED STATES	6,255,000	3.8	9,221,000	5.7	-2,966,000	-1.9	6,334,000	3.8

P = Preliminary

R = Revised

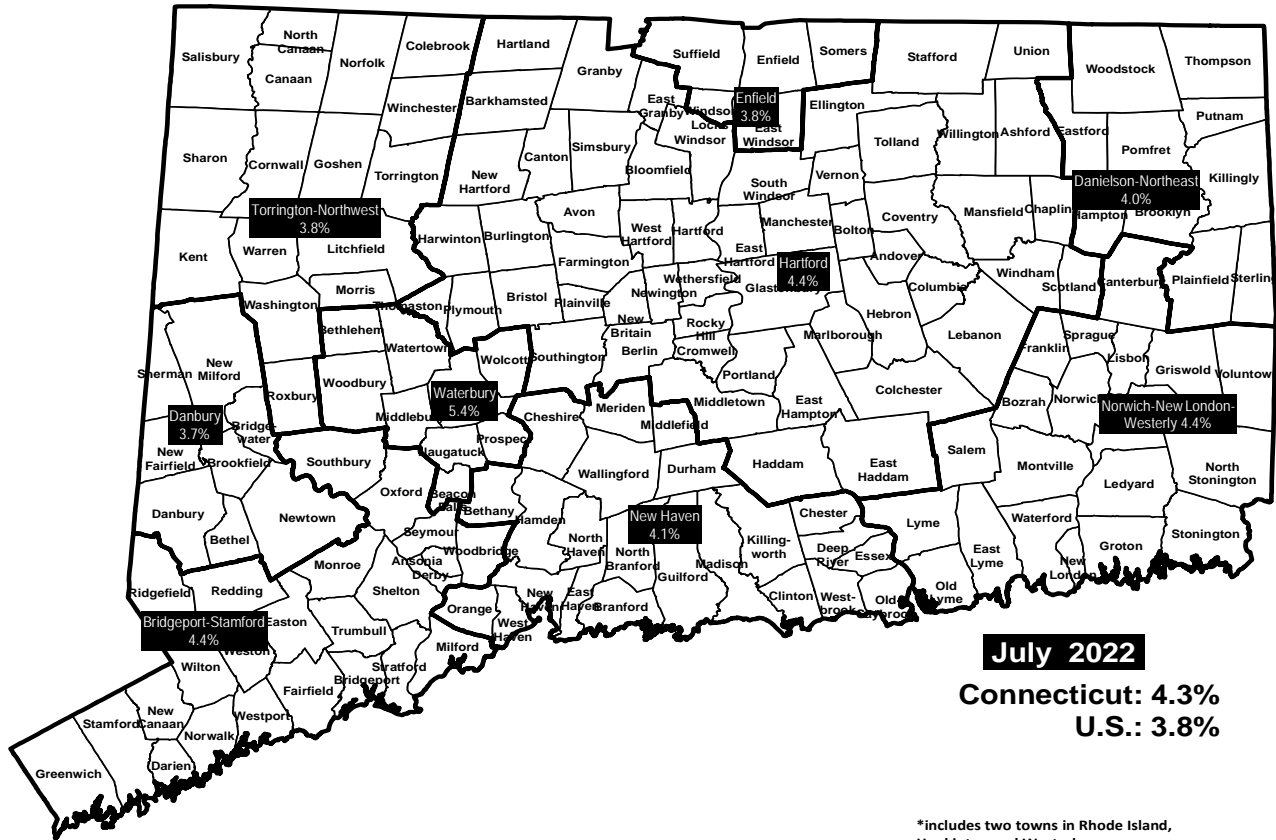
Labor force data included in this publication are developed in cooperation with the U.S. Department of Labor, Bureau of Labor Statistics.

* Worcester NECTA, CT part and Hampton LMA are combined ** Torrington Micropolitan NECTA and Litchfield LMA are combined

UNEMPLOYMENT RATES

Not Seasonally Adjusted

LABOR MARKET AREAS



HOURS AND EARNINGS

CONNECTICUT Statewide - Not Seasonally Adjusted

	Average Weekly Earnings				Average Weekly Hours				Average Hourly Earnings			
	July 2022 P	July 2021	Change over Yr.	June 2022 R	July 2022 P	July 2021	Change over Yr.	June 2022 R	July 2022 P	July 2021	Change over Yr.	June 2022 R
Private Industry All Employees	\$1,160.21	\$1,147.81	\$12.40	\$1,151.90	33.6	34.1	-0.5	33.8	\$34.53	\$33.66	\$0.87	\$34.08
Manufacturing* Production Workers	\$1,158.25	\$1,073.15	\$85.10	\$1,136.93	41.0	38.7	2.3	41.0	\$28.25	\$27.73	\$0.52	\$27.73

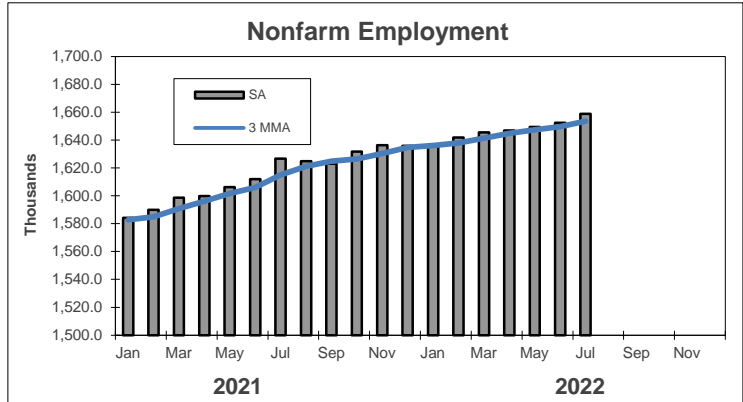
P = Preliminary R = Revised

Hours and earnings are also developed for the state's major industry sectors and Labor Market Areas. They can be found on our website at: www1.ctdol.state.ct.us/lmi

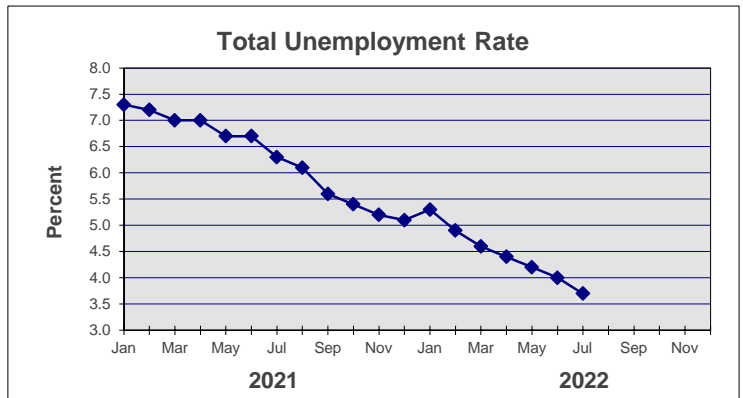
TRENDS

Seasonally Adjusted

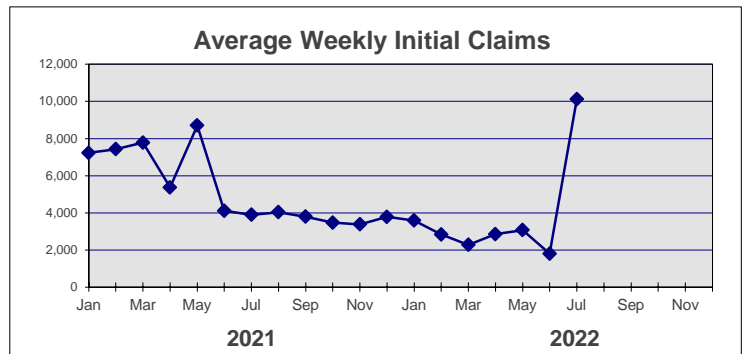
	Nonfarm Employment (000s)	Total Unemployment Rate
2021		
Jan	1,584.1	7.3
Feb	1,590.0	7.2
Mar	1,598.7	7.0
Apr	1,599.8	7.0
May	1,606.3	6.7
Jun	1,612.0	6.7
Jul	1,626.6	6.3
Aug	1,624.7	6.1
Sep	1,622.9	5.6
Oct	1,631.6	5.4
Nov	1,636.3	5.2
Dec	1,635.8	5.1



2022		
Jan	1,636.4	5.3
Feb	1,641.8	4.9
Mar	1,645.5	4.6
Apr	1,646.9	4.4
May	1,649.3	4.2
Jun	1,652.3 R	4.0 R
Jul	1,658.8 P	3.7 P
Aug		
Sep		
Oct		
Nov		
Dec		



	Avg Weekly Initial Claims	All Employee Weekly Hours*
2021		
Jan	7,226	34.2
Feb	7,431	33.9
Mar	7,780	34.2
Apr	5,366	34.1
May	8,702	34.5
Jun	4,109	33.9
Jul	3,892	34.1
Aug	4,031	34.3
Sep	3,789	34.1
Oct	3,472	33.9
Nov	3,376	34.1
Dec	3,780	34.4



2022		
Jan	3,585	34.1
Feb	2,837	34.0
Mar	2,275	33.9
Apr	2,848	33.8
May	3,066	34.2
Jun	1,800	33.8 R
Jul	10,124	33.6 P
Aug		
Sep		
Oct		
Nov		
Dec		



* Not seasonally adjusted

P = Preliminary

R = Revised

** Labor-management dispute